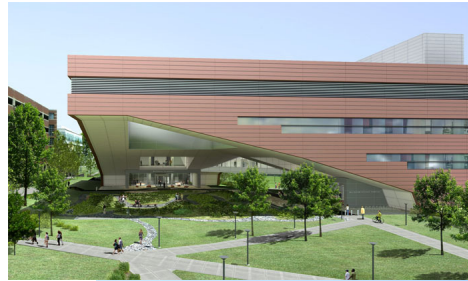


PENN STATE UNIVERSITY'S MILLENNIUM SCIENCE COMPLEX

Market Sector: Education
Project: Millennium Science Complex
Location: State College, Pennsylvania
Owner: The Pennsylvania State University
CM/GC: Whiting-Turner
Contract Type: Prime Contract
Tonnage: 4,200
Scope: Structural steel, Miscellaneous Metals, Metal Decking



Kinsley Manufacturing was contracted to fabricate and install the structural steel, miscellaneous metals and metal decking for the project.

This 275,000 square foot building was designed by the internationally renowned firm of Rafael Viñoly to foster collaborations in the developing convergence of materials and biomedical engineering. This project is the (1st or 2nd) largest construction project on the campus. This design included areas of the building that were four stories in height and one section that consisted of a 120-foot cantilever carrying two elevated stories.

Fabricating 4,200 USt of steel for this project required approximately 60,000 labor hours. The majority of this steel was fabricated in Kinsley's East Market Street facility, but supplemented by the E. Princess Street facility. Due to the size and complexity of certain pieces, it took our automated drill lines six to eight hours to complete the drilling for one piece and other members took four and a half weeks to assemble, which consisted of two shifts of two employees working 10-hour days, six days a week.

The erection of the steel is equally as impressive requiring 22,000 hours of labor, four cranes and, at our current peak, 75 iron workers. Again, due to the massive size of these members some of the field welds took as long as three 10-hour days to complete one weld. Another challenge was the overall site coordination with the various contractors and material deliveries. One of our off-site staging lots could only be used on a part-time basis due to parking for the football games.

